



11685 Crossroads Circle, Suites A-F
 Middle River, MD 21220
 (410) 312-3600
www.image360.com

Franchised Units:	109	In Business Since:	1986	Royalty:	6%
Company-Owned Units:	2	Average Franchise Fee:	\$40K	IFA Member:	Yes
Total Operating Units:	111	Total Investment Range:	\$192.4-364.1K	Term of Initial Contract:	20 Years

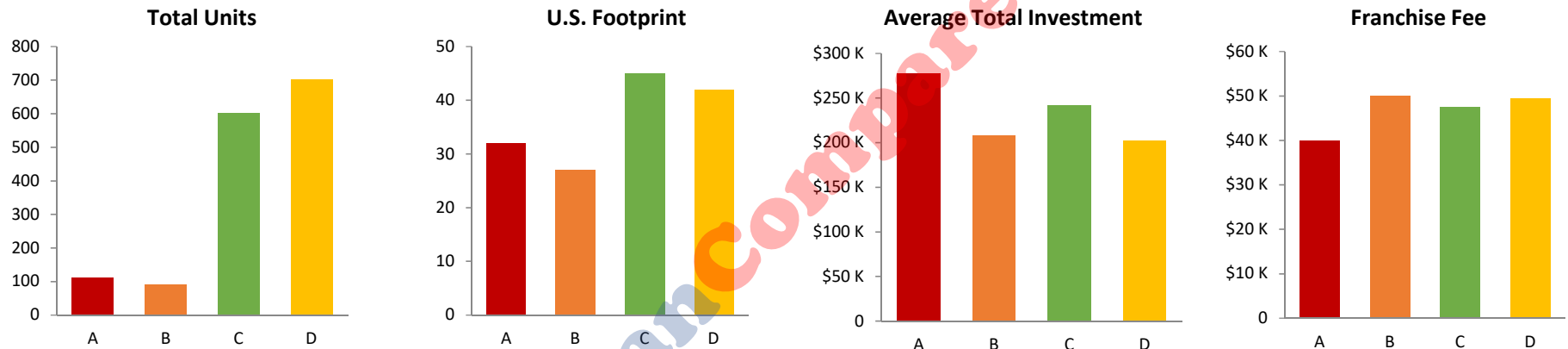
COMPANY'S DESCRIPTION HERE
(MAX. 600 WORDS & 2 IMAGES)

Sign Stores Industry

	Company Name (DBA)	Legal Name	Final Score
A	Image360	Sign & Graphics Operations, LLC	861
B	YESCO	YESCO Franchising, LLC	782
C	FASTSIGNS (Full-Service Center)	FASTSIGNS International, Inc.	734
D	Signarama	Sign*A*Rama, Inc.	714

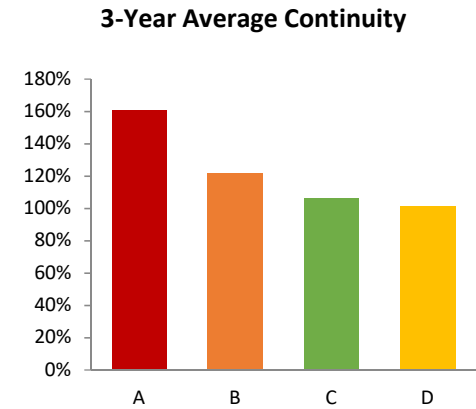
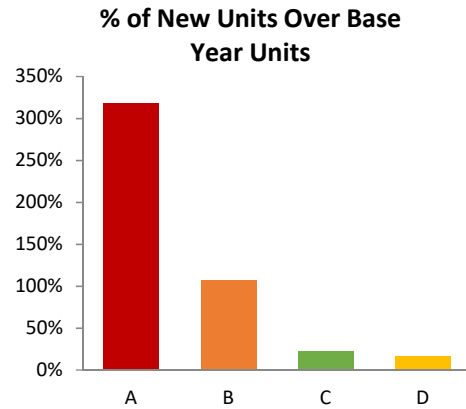
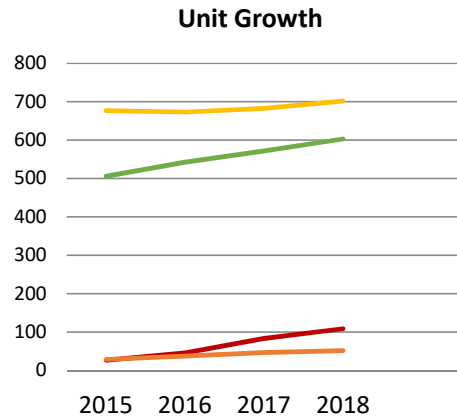
Key Unit Investment Variables

30%



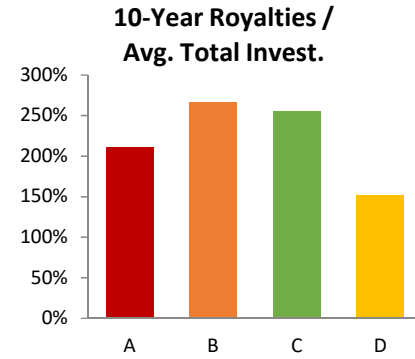
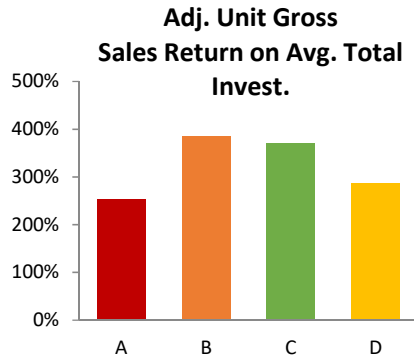
- **Total Units** is a valuable measure if recent growth was accompanied by proper support. Meteoric growth, however, with the help of third parties, frequently means franchisees are left to fend for themselves while management focuses on growth for its own sake.
- The greater the **Footprint/Geographical Coverage**, the better all franchisees are served. Only U.S. states are included.
- For the purpose of the Franchise Matrix™ analysis, the **Average Total Investment** is used in all cases.
- The **Franchise Fee** should not significantly exceed the franchise fee of its primary competitors.

	Image360		YESCO		FASTSIGNS (Full-Service Center)		Signarama		
Weighting for Primary FDD Variables (300 Points)	Data	Score	Data	Score	Data	Score	Data	Score	Max. Score
Year-End Total Franchised Units	109		52		603		702		
Year-End Total Company-Owned Units	2		39		0		0		
Year-End Total Units	111	40	91	35	603	50	702	50	50
% of Franchised Units	98.2%		57.1%		100.0%		100.0%		
% of Company-Owned Units	1.8%	5	42.9%	7	0.0%	0	0.0%	0	10
U.S. Footprint (# of U.S. States)	32	35	27	32	45	35	42	35	35
Total Low Investment	\$192,357		\$65,000		\$193,548		\$110,013		
Total High Investment	\$364,090		\$352,200		\$289,639		\$295,520		
Average Total Investment Per Unit	\$278,224		\$208,600		\$241,594		\$202,767		
Low Unit Size Estimate (Square Feet)	1,800		No Data		1,300		1,000		
High Unit Size Estimate (Square Feet)	2,200		No Data		1,500		1,500		
Average Unit Size (Square Feet)	2,000		N/A		1,400		1,250		
Average Total Investment Per Square Feet	\$139		N/A		\$173		\$162		
Average Franchise Fee (Single Unit)	\$40,000	18	\$50,000	12	\$47,500	12	\$49,500	12	40
Average Annual Royalty Fee (On-Going After Trial Period)	6.0%	80	6.0%	80	6.0%	80	4.0%	90	90
Term of Initial Contract (Years)	20	35	10	20	10	20	35	35	35
Term of First Contract Renewal (Years)	10	11	5+5	11	10	11	35	20	20
Average Transfer Fee (Single Unit)	\$30,000	1	\$5,000	10	\$17,500	3	\$29,500	1	10
Year Incorporated	1986	10	2010	5	1986	10	1986	10	10
Franchising Since	2013		2011		1986		1987		
Issuance Date of FDD (Issue Date)	3/28/2018		3/31/2018		5/1/2018		3/23/2018		



- **3-Year Compound Annual Unit Growth** measures the unit growth from base year to end of 2017. Assuming proper support on the part of the franchisor, higher growth is rewarded. Steady and controlled **Unit Growth** are preferred over meteoric growth. Negative unit growth raises red flags.
- **% of New Units Over Base Year Units** is the Total End of 2017 Units divided by Base Year Beginning Units.
- **3-Year Average Continuity Rate** is an important and commonly used metric within the franchising industry that measures the success of a franchise system over its most recent past. Continuity rate is determined for each year by dividing end-of-year total units by beginning-of-year total units and dividing the 3 annual rates by 3 to arrive at an average. If there are a high number of closures or non-renewals within a franchise, the continuity rate will generally result in a rate of less than 100%, as will a system that cannot support its growth and, accordingly, its franchisees are failing. A high continuity rate is evidence of strong support systems. Continuity rates of over 100% were rewarded and ones with less than 100% were penalized.

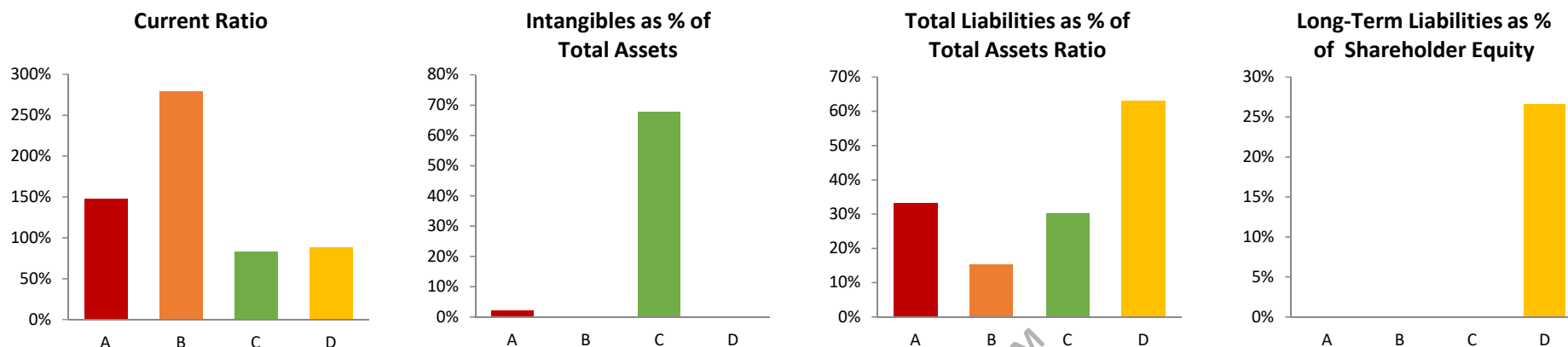
Weighting for Primary FDD Variables (250 Points)	Image360		YESCO		FASTSIGNS (Full-Service Center)		Signarama		Max. Score
	Data	Score	Data	Score	Data	Score	Data	Score	
Base-Year Beginning Franchised Units	27		29		506		677		
New Franchised Units Over Following 3 Years	86		31		114		110		
Total Franchised Units at the End of Year 3	109		52		603		702		
% of New Units Over Base Year Units	318.5%	40	106.9%	40	22.5%	10	16.2%	8	40
3-Year Compound Annual Unit Growth	59.2%	70	21.5%	40	6.0%	25	1.2%	10	70
3-Year Average Continuity Rate	160.9%	140	121.8%	140	106.0%	115	101.2%	105	140



- Adjusted Unit Gross Sales by itself is not as important as **Adjusted Unit Gross Sales as percentage of the Average Total Investment**. Sales and profits must be evaluated as a function of the total investment.
- Whereas a modest difference in year 1 sales as a function of the average investment might be considered of minor importance, a 10-year time horizon puts these differences into perspective.
- Similarly, while a modest difference in year 1 royalty rates between franchisors might be considered of minor importance, cumulative **Royalty** payments over a 10-year time frame as a percentage of Average Total Investment put these differences into perspective.

	Image360		YESCO		FASTSIGNS (Full-Service Center)		Signarama		
Weighting for Primary FDD Variables (350 Points)	Data	Score	Data	Score	Data	Score	Data	Score	Max. Score
Company-Wide Average Gross Sales or Revenue	\$741,670		\$700,672		\$777,594		\$583,378		
Period Operated	Over 3 Years		1 Year		12 Months		Over 2 Years		
Calculation Based on # of Units Evaluated	93 of 109		36 of 52		515 of 603		321 of 702		
Calculation Based on Franchised or Company-Owned Units	Franchised		Franchised		Franchised		Franchised		
% Adjustment*	95%		115%		115%		100%		
Adjusted Average Gross Sales or Revenue	\$704,587		\$805,773		\$894,233		\$583,378		
Adjusted Unit Gross Sales Return on Avg. Total Investment	253.2%	167	386.3%	175	370.1%	175	287.7%	175	175
Cum.10-Year Gross Sales (Compounded at 5% Growth / Year)	\$9,795,078		\$9,253,626		\$10,269,518		\$7,704,549		
10-Year Sales / Average Total Investment	35.2	75	44.4	75	42.5	75	38.0	75	75
10-Year Total Royalty Payments	\$587,705		\$555,218		\$616,171		\$308,182		
10-Year Royalties / Average Total Investment	211.2%	5	266.2%	0	255.0%	0	152.0%	20	50
Detailed Income Statement (EBITDA All Units Optimal)	70%	35	0%	0	100%	50	0%	0	50

* To adjust stated Average Gross Sales to a "standard" of greater than 2 years, the following adjustments were applied:
 Over 1 Year = 115%; Over 2 Years = 100%; Over 3 Years = 95%; Over 4 Years = 90%; Over 5 Years = 85%.



- The **Current Ratio (or Working Capital Ratio)** is a liquidity ratio that reflects the franchisor's ability to pay back its short-term liabilities. A ratio of less than 1 raises a red flag as to whether a franchisor can pay its short-term obligations when due.
- **Intangibles**, including **Goodwill**, are long-term assets represented by non-physical assets. Franchisors whose brands are household names may justify a higher value for intangibles than a relatively new brand with limited experience in the marketplace.
- **Total Liabilities as percentage of Total Assets Ratio** reflects the long-term strength of the franchisor's balance sheet. Over time, one would expect the percentage to decrease. A lower percentage is preferred over a higher percentage.
- **Long-term Liabilities as percentage of Shareholder Equity** reflects the franchisor's long-term capital structure. Over time, one would expect the percentage to decrease. A lower percentage is preferred over a higher percentage.

Balance Sheet Items (\$000)	Image360		YESCO		FASTSIGNS (Full-Service Center)		Signarama		Max. Score
	Data	Score	Data	Score	Data	Score	Data	Score	
Weighting for Primary FDD Variables (100 Points)	Data	Score	Data	Score	Data	Score	Data	Score	Max. Score
Ending Date for Financials (Closing Date on Balance Sheet)	12/31/2017		12/31/2017		12/31/2017		12/31/2017		
Current Assets	\$1,931		\$921		\$6,540		\$7,231		
Intangibles & Goodwill	\$86		\$0		\$17,593		\$0		
Other Assets	\$1,914		\$1,230		\$1,830		\$8,158		
Total Assets	\$3,931		\$2,151		\$25,963		\$15,389		
Current Liabilities	\$1,305		\$330		\$7,873		\$8,217		
Long-Team Liabilities	\$0		\$0		\$0		\$1,510		
Total Liabilities	\$1,305		\$330		\$7,873		\$9,727		
Shareholders' Equity	\$2,626		\$1,821		\$18,090		\$5,662		
Total Liabilites & Shareholders' Equity	\$3,931		\$2,151		\$25,963		\$15,389		

Key Financial Ratio (%)s	Image360		YESCO		FASTSIGNS (Full-Service Center)		Signarama		Max. Score
	Data	Score	Data	Score	Data	Score	Data	Score	
Weighting for Primary FDD Variables (100 Points)									
Current Ratio (or Working Capital Ratio)	148.0%	22	279.1%	25	83.1%	6	88.0%	6	25
Intangibles & Goodwill as % of Total Assets	2.2%	19	0.0%	20	67.8%	2	0.0%	20	20
Total Liabilities as % of Total Assets Ratio	33.2%	33	15.3%	35	30.3%	35	63.2%	25	35
Long-Term Liabilities as % of Shareholders' Equity Ratio	0.0%	20	0.0%	20	0.0%	20	26.7%	17	20

Total Score	861	782	734	714	/1000
--------------------	------------	------------	------------	------------	--------------

FranCompare™

FranCompare™ and the World Franchising Network have been in the franchising business for over 30 years. During that period, we have gained some meaningful insights into what separates great franchise systems from mediocre ones. The FranCompare™ Franchise Recognition Program is the result of those decades of experience. The underlying analysis relies upon a unique template called Franchise Matrix™. The Franchise Matrix™ allows a prospective investor, analyst or lender to prioritize which objective factors in each franchisor's FDD are most important in analyzing competing systems and to compare systems side-by-side. Keep in mind that the methodology and results of the Franchise Recognition Program are solely the opinions of FranCompare™ and are based solely on what we consider to be the key factors taken from each franchisor's 2018 FDD. If you want to modify the weighting of the variables or change the variables themselves, please [click here](#) for a customizable worksheet that can accommodate your personal priorities.

FranCompare™ also provides custom side-by-side analyses for clients. You can choose from over 2,100 2018 FDDs and over 2,300 2017 FDDs listed on www.FranchiseDisclosures.com. If you have an interest in a custom FranCompare™ analysis, please give us a call at (888) 612-9908. The minimum charge for 4 companies is \$600 and each additional company is \$150.

Source: All information in the FranCompare™ Franchise Recognition Program, the Franchise Matrix™ and related charts and graphs was compiled from publicly available Franchise Disclosure Documents (FDDs). FranCompare™ permits no reproduction, electronic transmission or other distribution of the FranCompare™ Franchise Recognition Program or Franchise Matrix™, in whole or in part, except as authorized by separate signed Agreement.

FranCompare™ and Franchise Matrix™ are marks of FranCompare, Inc. All FranCompare™ analyses are copyrighted with the US Copyright Office. Any unauthorized use or infringement of the above will be pursued.

Feel free to contact us at:

FranCompare™

1814 Franklin Street, Suite 800

Oakland, CA 94612

(888) 612-9908